



# sageVIEW.services™

Monitor - Manage - Maintain - Optimize

Content. Hardware. Software. These are crucial components of the digital experience. But the true distinction of a successful digital signage initiative is the quality of the **SERVICES** to launch, sustain, and optimize the program.

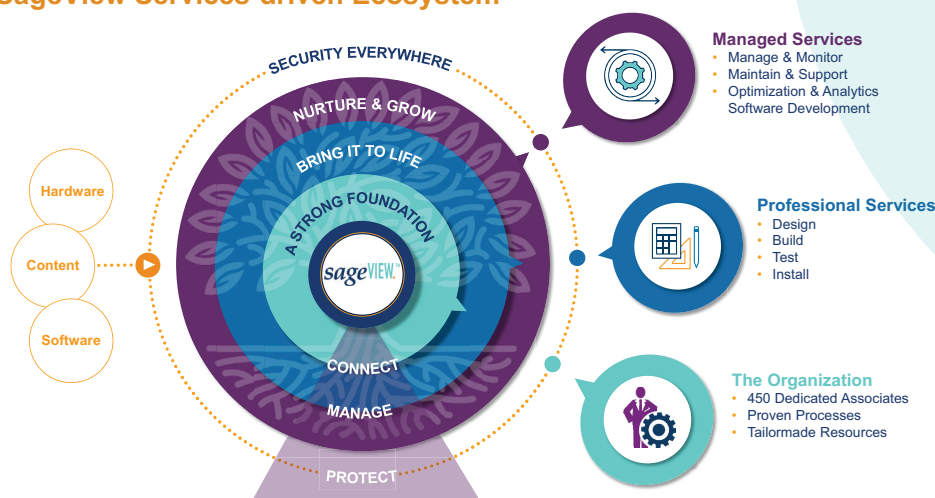
A services-driven digital signage ecosystem gets you to Day One, and keeps going to Day 1,000, Device 1,000, Store 1,000 and beyond. In fact, much of the secret to long-term viability and sustainability occurs long before Day One.

**SageVIEW Services™** are the core of the SageVIEW ecosystem and what truly differentiates SageVIEW from traditional hardware or software-driven approaches.

- SageVIEW Professional Services, centered in the National Logistic Center, get you strategically to Day One. These services include Design, Configuration, Test and Turn-up, and Installation services.
- SageVIEW Managed Services ensure a sustainable, scalable digital experience to Day 1,000 and beyond. Spearheaded from our 24/7 Network Operations Centers, SageVIEW Managed Services include management, monitoring, maintenance, field support, analytics, and optimization.

**SageVIEW Services** is part of SageNet's SageVIEW™ services-driven, best-in-breed digital signage ecosystem. Combining decades of leadership in digital signage and network connectivity with deep vertical market expertise, SageNet brings you a fully managed end-to-end approach to creating an integrated on-site/in-store digital experience.

## SageView Services-driven Ecosystem



## Features & Benefits:

- **Services-driven:** Flexible, proven ecosystem delivers solutions tailored to your specific business objective, not dictated by predetermined HW/SW
- **Professional Services:** Suite of strategic services ensure objective-driven launch and sustainable operations
- **Managed Services:** Enterprise-class managed services provide worry-free digital signage monitoring, management, and optimization
- **Field-proven Innovation:** Combines 3 decades of managed services expertise with state-of-the-art, IoT-based deployment and management technologies

sageVIEW.services™

## SageVIEW SERVICES-DRIVEN ECOSYSTEM

From initial discovery sessions to design, implementation, launch and ongoing maintenance management, the SageVIEW services-driven ecosystem ensures your digital experience is sustainable, maintainable, engaging, and effective. Listed below are just some of the features of SageVIEW Professional and Managed Services.

### SageVIEW Professional Services

- Requirements, Goals, Objectives Definition
- Discovery and Needs Analysis
- Site Surveys
- Network/Content Distribution Design
- Program Design
- Pilot/PoC Programs
- Hardware & IT Infrastructure Provisioning Planning
- Deployment planning (H/W, S/W, IT, Training, Operations)
- Network/architecting and management
- Procurement (CMS, Displays, Players, Audio, Fixtures, Cabling, Network Devices)
- Test and Turn Up
- SOC Configuration
- Media player imaging
- Hardware shipping and logistics
- IT/Network Provisioning
- Onsite Install Services (Electrical, AV, Mounts, Displays, Enclosures)
- Complete Operational documentation
- Training

### SageVIEW Managed Services

- Dedicated Network Operations Centers
- Content Loading/Scheduling/Management
- Hardware Warranty Services
- Digital Asset Management
- Managed AV/OS Patching
- Dedicated Customer Support Center
- Managed Network, Device, Content Monitoring
- Automated Fail-over and Backup Services
- Ongoing Content development updates
- Application/Firmware updates
- Warranty Repairs and Management
- Strategic Spares Management
- Nationwide Field Service
- Defined Escalation Procedure
- Managed Network Services
- Managed Cybersecurity Services
- Reporting, Performance, Analytics, Lessons learned, Optimization

### Don't Miss Our Other SageVIEW Solution Suites:

- **SageVIEW Impact™** leverages hyper-targeted media, through state-of-the-art technology and dynamic content, to connect retailers with consumers in-store; outdoors at the drive-thru, curb, or pumpside; and via menuboards.
- **SageVIEW Inspire™** offers integrated, interactive, inspiring employee engagement in the workplace, leading to increased sales, improved operational performance, and stronger employee retention.
- **SageVIEW Experience Labs™** specializes in content development, data integration, interactivity, and analytics to optimize human-oriented media-rich interactive digital experiences.

### SageNet Managed Services

Enhancing the SageVIEW digital experience platform, SageNet has more than 30 years of experience providing a broad range of managed network and cybersecurity services to the retail industry, from primary and back-up networks, merchant connectivity and PCI compliant networks to customized networking technology solutions – all optimized to meet the needs of multi-site operations.

**sageVIEW**.services™



To learn more about SageVIEW™, visit [www.sagenet.com](http://www.sagenet.com) or call 1-866-480-2263.

SageVIEWservicesDS092421

Tulsa | Atlanta | Chicago | Philadelphia | Toronto | Washington, D.C.  
866.480.2263 | [www.sagenet.com](http://www.sagenet.com)