



SAGENET RESTAURANT-READY

Integrated Store Solutions

For today's restaurant chain, gigabit speed bandwidth is only the beginning. To achieve a truly consistent, frictionless customer experience, siloed systems need to be replaced with integrated solutions that create the seamless experience patrons expect.

SageNet's Restaurant-Ready integrated solution provides fast-casual and QSR operations with an intelligent, scalable approach to connectivity across hundreds or even thousands of locations.

By integrating vital in-store services, SageNet's Restaurant-Ready platform helps eliminate the headaches associated with opening locations, launching next-gen establishments and introducing new applications and services. The Restaurant-Ready suite of services includes:

- Managed firewalls
- SIEM and SOC services
- Guest Wi-Fi
- Digital signage
- Data analytics

THE UNIQUE NEEDS OF THE RESTAURANT CHAIN IN THE DIGITAL AGE

SageNet has more than 30 years of experience supporting some of the nation's leading restaurant chains. (The company's largest customer has more than 15,000 locations.) SageNet's Restaurant-Ready methodology offers retailers a PCI compliant, comprehensive managed services approach that includes:

- 24x7 network and security operations and support
- PCI Compliance scanning and support
- Restaurant-focused subject matter experts (SMEs)
- Dedicated program managers
- Consolidated billing
- Secure management portal
- National Logistics Center
- Nationwide field service organization

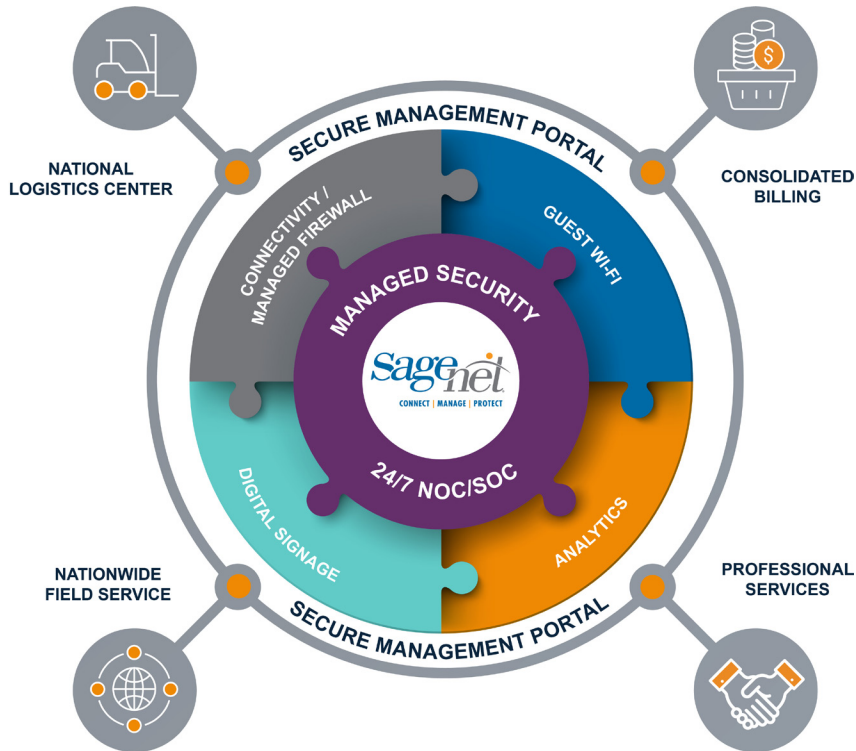
SAGENET MANAGED NETWORKS, MANAGED SECURITY AND ANALYTICS

SageNet's Restaurant-Ready platform delivers rapidly deployable, effective and affordable connectivity, security and compliance solutions engineered for the multisite operation, backed by a team of certified and experienced network engineers and cybersecurity experts.

SageNet analytics can help restaurant operators identify high-value customers through their network usage patterns and manage network traffic to optimize the user experience. Network and location analytics can also provide restaurant operators valuable insight into demographics and behavior that helps fully optimize the dining experience.

To learn more about SageNet Restaurant-Ready solutions, visit www.sagenet.com or call 1-866-480-2263.





*sage*CONNECT.™

*sage*SECURE.™

*sage*Wi-Fi.™

*sage*VIEW.™

*sage*IoT.™

- **SageCONNECT™:** From managed firewall services to primary broadband to guest-Wi-Fi to cellular or satellite back-up, the industry's leading restaurant chains count on SageCONNECT for reliable, secure and affordable connectivity.
- **SageSECURE™:** Whether outsourcing or co-sourcing security operations, SageNet's security team helps some of the nation's largest restaurant chains achieve PCI compliance, protect critical data and respond 24x7 when the bad guys try to attack.
- **SageWi-Fi™:** Improve the quality and reliability of Internet access while also elevating the guest experience with unique branding and mobile integration. Increase brand loyalty and encourage customer engagement with free or paid wireless service. Use network analytics to explore network health and usage, and establish IT standards to monitor and predict issues.

- **SageVIEW™:** Our Digital Signage solutions offer simplicity and security to meet the needs of Marketing and IT to create the ultimate on-site digital experience. We bring you the systems integration expertise, highly qualified technical resources, and depth of experience in Managed Network Services to design, install, and monitor a multi-site digital signage solution.
- **SageIoT™:** SageNet's IoT Visibility platform detects enterprise-wide problems and provides network solutions through IoT data collection and analytics. The platform also gathers data from multiple sources to provide network standards and predictive analytics, improving the overall network and end-user experience.



To learn more about SageNet Restaurant-Ready solutions, visit www.sagenet.com or call 1-866-480-2263.

RestaurantDS013020

Tulsa | Washington, D.C. | Atlanta | Chicago | Philadelphia
866.480.2263 | www.sagenet.com